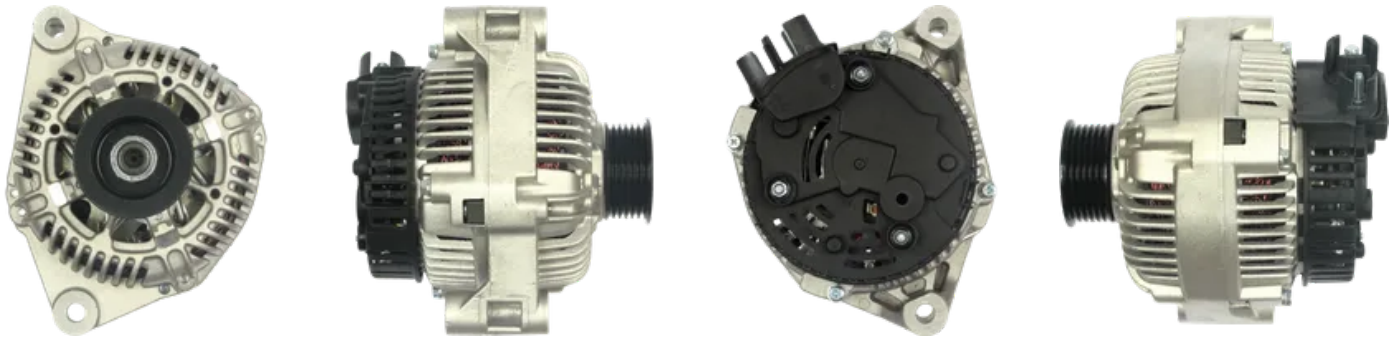


## Product card

Data		rasgos del producto	
index AS:	A3136	Tensión [ V ]	12
EAN:	5901259457612	Intensidad [ A ]	95
Product type:	Para estrenar	Tamaño A [ mm ]	92.00
Line:	<b>STANDARD LINE</b>	Tamaño B [ mm ]	56.00
Producer:	AS-PL	Pulley	AP
Reemplazo para:	Valeo	D.1 [ mm ]	10.00
OE:	<b>A13VI101</b>	D.2 [ mm ]	10.00
Product status:	Active	G [ qty ]	6
		O.D.1 [ mm ]	56.00
		L.1 [ mm ]	176.50

## Photos



## Número de referencia

Número	Producer
AEA3233	AUTOELECTRO
0986041401	BOSCH
113604	CARGO
CAL15226AS	CASCO
CAL15226GS	CASCO
4428	CEVAM
DRB1401	DELCO
EAA-221161	EAA
56545	EAI
28-2687	ELSTOCK
9041401	FRIESEN
CA1052IR	HC PARTS
32041401	HERTH+BUSS
301052RI	KUHNER
11.1052	LAUBER
11.1052M	LAUBER
LRB00333	LUCAS

Número	Producer
944390414010	MAGNETI MARELLI
A2TA2091	MITSUBISHI
A2TA2091A	MITSUBISHI
A2TA2091D	MITSUBISHI
A2TA2091E	MITSUBISHI
A2TA2091F	MITSUBISHI
5705JC	PEUGEOT
5705W9	PEUGEOT
5705X0	PEUGEOT
9618961480	PEUGEOT
9618961680	PEUGEOT
9631318280	PEUGEOT
89212942	POWERMAX
9212942	POWERMAX
20110333	PRESTOLITE
20179622BN	REAL
20179622OE	REAL
2015226	SANDO
SA081	SOVEREIGN
2541784	VALEO
2541784B	VALEO
2542256	VALEO
2542356	VALEO
436654	VALEO
439083	VALEO
A13VI101	VALEO
A13VI233	VALEO
A13VI263	VALEO
21331RW	WAI / TRANSPO
21333R	WAI / TRANSPO
ALT14041	WOODAUTO

## Aplicaciones

### CITROEN

marca	modelo	tipo	año	notas
CITROEN	<a href="#">Berlingo 1.8 i</a>	[LFX(XU7JB)]	05.1997-11.2002	
CITROEN	<a href="#">Berlingo 1.8 i 4WD</a>	[LFX(XU7JB)]	05.1997-11.2002	
CITROEN	<a href="#">Evasion 2.0 16V</a>	[RFV(XU10J4)]	05.1998-04.2000	
CITROEN	<a href="#">Evasion 2.0 Turbo</a>	[RGX(XU10J2TE)]	04.1997-07.2002	
CITROEN	<a href="#">Xantia 1.8 i</a>	[LFX(XU7JB)]	04.1997-04.2003	
CITROEN	<a href="#">Xantia 1.8 i 16V</a>	[LFY(XU7JP4)]	06.1995-04.2003	
CITROEN	<a href="#">Xantia 2.0 i</a>	[RFX(XU10J2C)]	06.1995-01.1998	
CITROEN	<a href="#">Xantia 2.0 i 16V</a>	[RFV(XU10J4)]	06.1995-04.2003	

marca	modelo	tipo	año	notas
CITROEN	Xantia 2.0 Turbo	[RGX(XU10J2TE)]	06.1995-04.2003	
CITROEN	XM 2.0 i 16V	[RFV(XU10J4)]	05.1995-10.2000	
CITROEN	XM 2.0 Turbo	[RGX(XU10J2TE)]	05.1992-10.2000	
CITROEN	Xsara 1.8 i	[LFX(TU7JB)]	07.1997-09.2000	
CITROEN	Xsara 1.8 i	[LFX(XU7JB)]	07.1997-08.2000	
CITROEN	Xsara 1.8 i	[LFX(XU7JP)]	04.1998-09.2000	
CITROEN	Xsara 1.8 i 16V	[LFY(XU7JP4)]	07.1997-08.2000	
CITROEN	Xsara 2.0 16V	[RFS(XU10J4S)]	04.1997-08.2000	
CITROEN	Xsara 2.0 16V	[RFV(XU10J4)]	07.1997-09.2000	
CITROEN	Xsara 2.0 i 16V	[RFS(XU10J4S)]	02.1998-03.2005	
CITROEN	ZX 1.8 i 16V	[LFY(XU7JP4)]	01.1996-02.1998	
CITROEN	ZX 2.0 i	[RFX(XU10J2)]	06.1996-10.1997	
CITROEN	ZX 2.0 i 16V	[RFS(XU10J4S)]	05.1996-06.1997	
CITROEN	ZX 2.0 i 16V	[RFT(XU10J4/Z)]	07.1992-10.1997	

## FIAT

marca	modelo	tipo	año	notas
FIAT	Ulysse 2.0 16V	[RFV]	05.1998-05.2000	
FIAT	Ulysse 2.0 Turbo	[RGX (XU10J2CTE)]	03.1997-08.2002	

## LANCIA

marca	modelo	tipo	año	notas
LANCIA	Zeta 2.0 Turbo	[RGX]	12.1996-09.2002	

## PEUGEOT

marca	modelo	tipo	año	notas
PEUGEOT	306 1.8 16V	[LFY(XU7JP4)]	03.1997-10.2003	AC
PEUGEOT	306 2.0	[RFV(XU10J4)]	03.1997-10.2003	
PEUGEOT	306 2.0	[RFX(XU10J2)]	07.1996-06.2000	
PEUGEOT	306 2.0 16V	[RFV(XU10J4)]	03.1997-10.2003	
PEUGEOT	306 2.0 i 16V	[RFS(XU10J4S)]	07.1996-10.2003	
PEUGEOT	306 2.0 i 16V	[RFT(XU10J4)]	07.1996-04.1997	
PEUGEOT	306 2.0 i XS	[RFX(XU10J2)]	07.1996-04.1997	
PEUGEOT	306 2.0 S 16	[RFT(XU10J4)]	07.1996-04.1997	
PEUGEOT	306 2.0 S 16	[RFY(XU10J4Z)]	07.1996-04.1997	
PEUGEOT	306 2.0 ST	[RFX(XU10J2)]	07.1996-04.1997	
PEUGEOT	406 1.8		10.1997-03.1999	
PEUGEOT	406 1.8	[LFX(XU7JB)]	05.1997-06.2004	
PEUGEOT	406 1.8 16V	[LFY(XU7JP4)]	10.1995-06.2004	AC
PEUGEOT	406 2.0 16V	[RFV(XU10J4)]	11.1995-06.2004	AC
PEUGEOT	406 2.0 16V	[RFV(XU10J4)]	11.1995-02.2005	
PEUGEOT	406 2.0 Turbo	[RGX(XU10J2TE)]	10.1996-08.2002	
PEUGEOT	605 2.0 16V	[RFV(XU10J4)]	06.1995-05.1999	
PEUGEOT	605 2.0 Turbo	[RGX(XU10J2TE)]	07.1995-05.1999	

marca	modelo	tipo	año	notas
PEUGEOT	<a href="#">806 2.0 16V</a>	[RFV(XU10J4)]	05.1998-09.2000	
PEUGEOT	<a href="#">806 2.0 Turbo</a>	[RGX(XU10J2TE)]	04.1997-08.2002	
PEUGEOT	<a href="#">Partner 1.8</a>	[LFX(XU7JB)]	05.1997-08.2002	